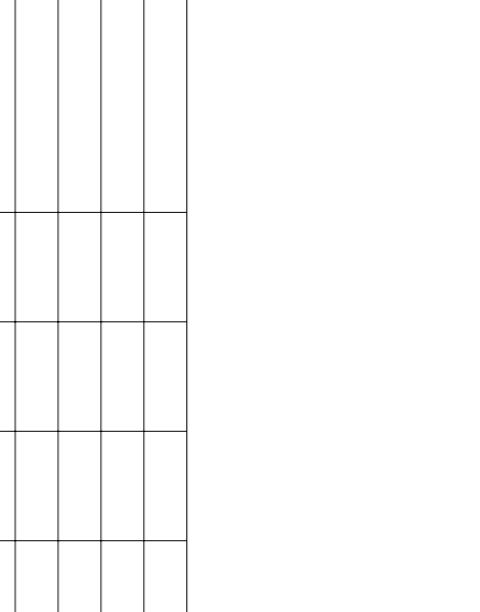
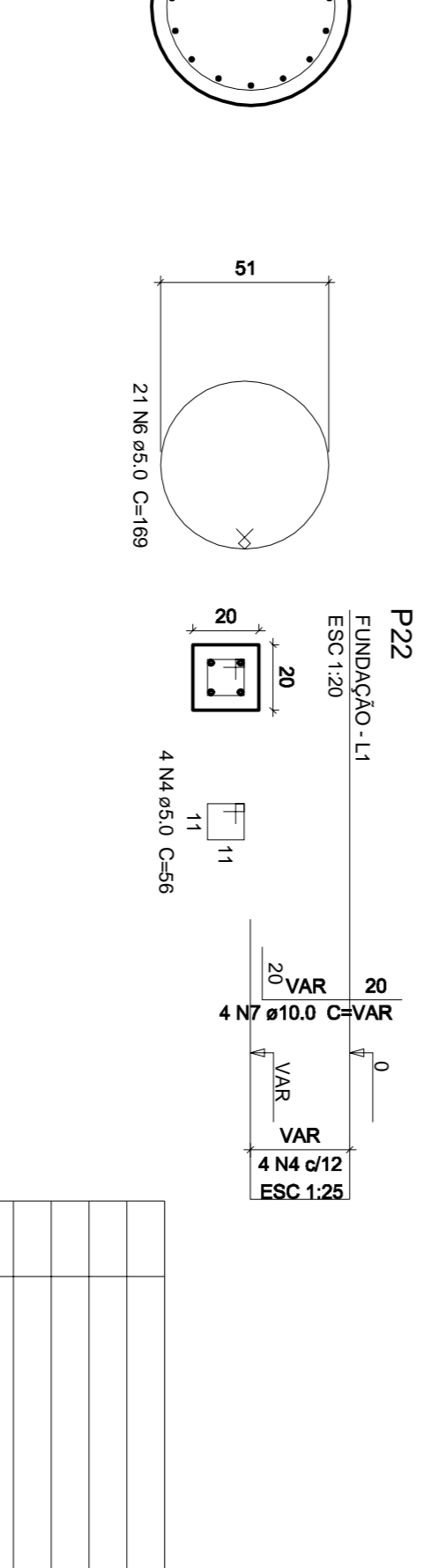
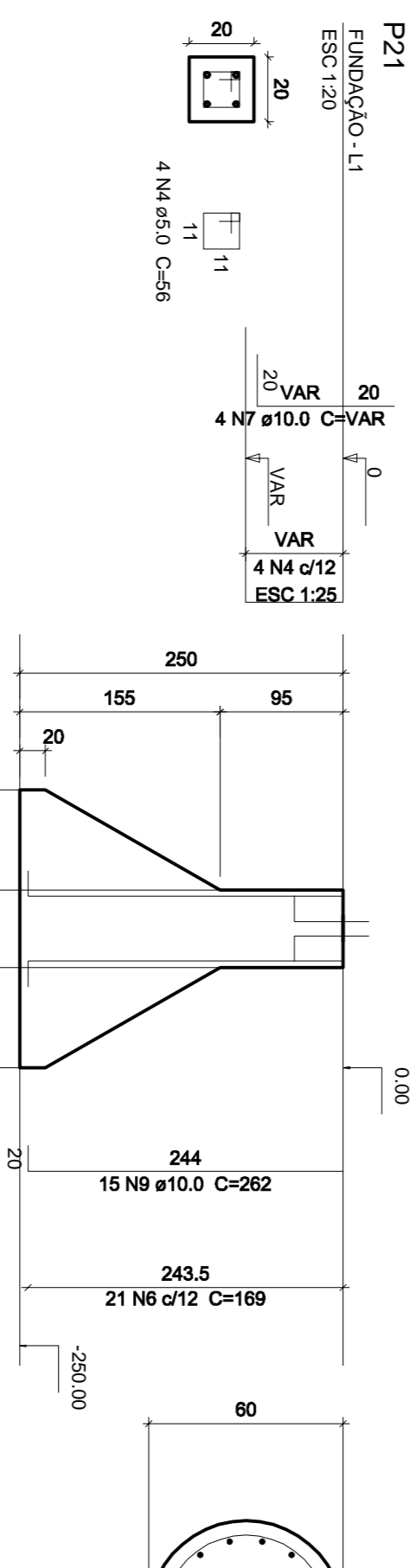
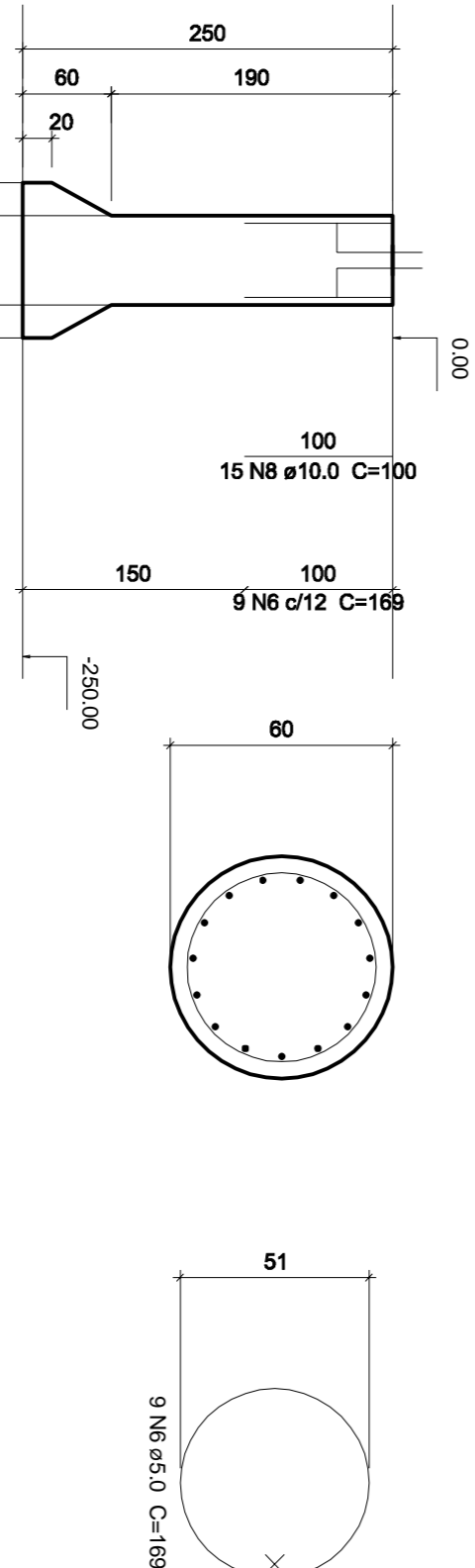
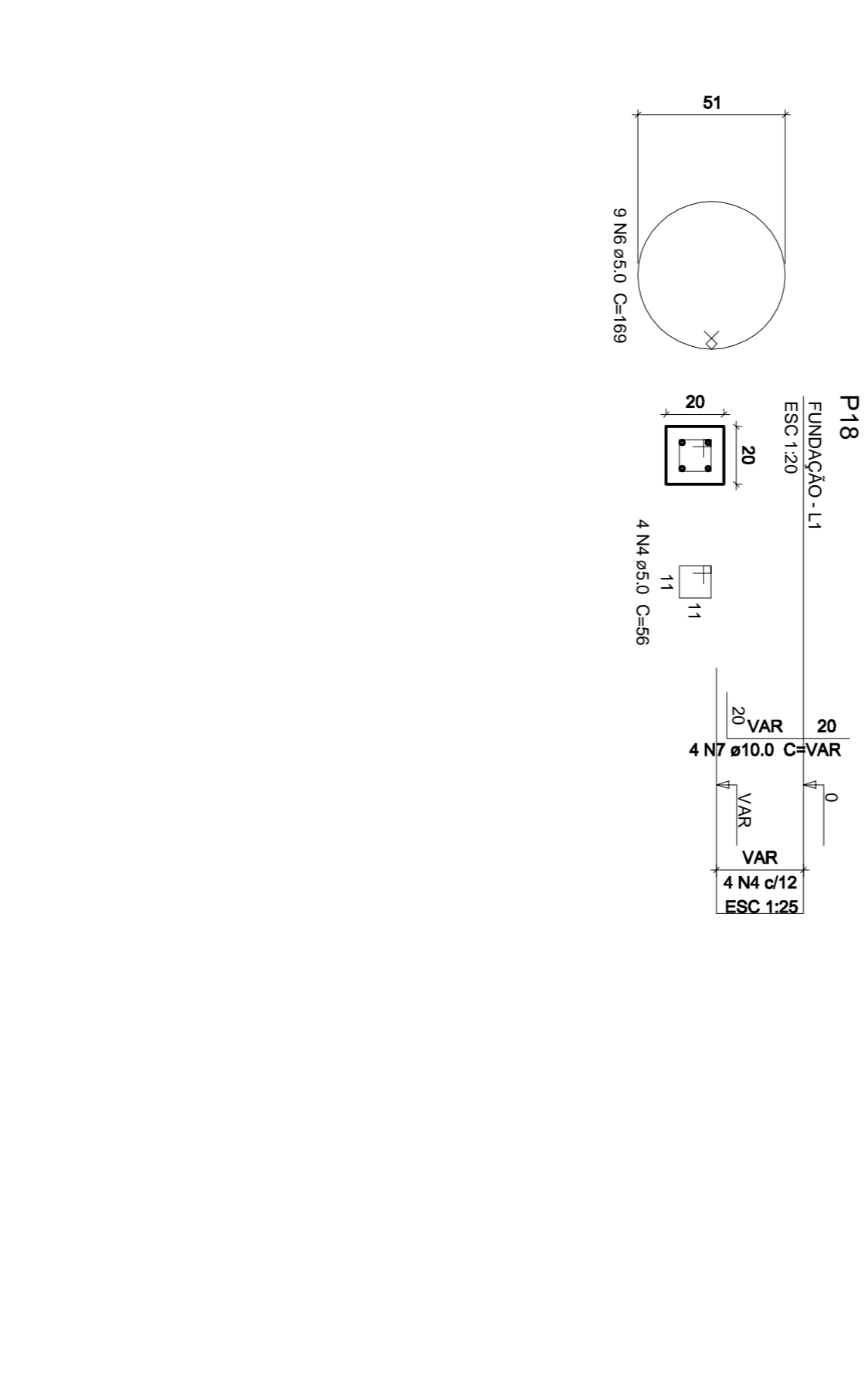
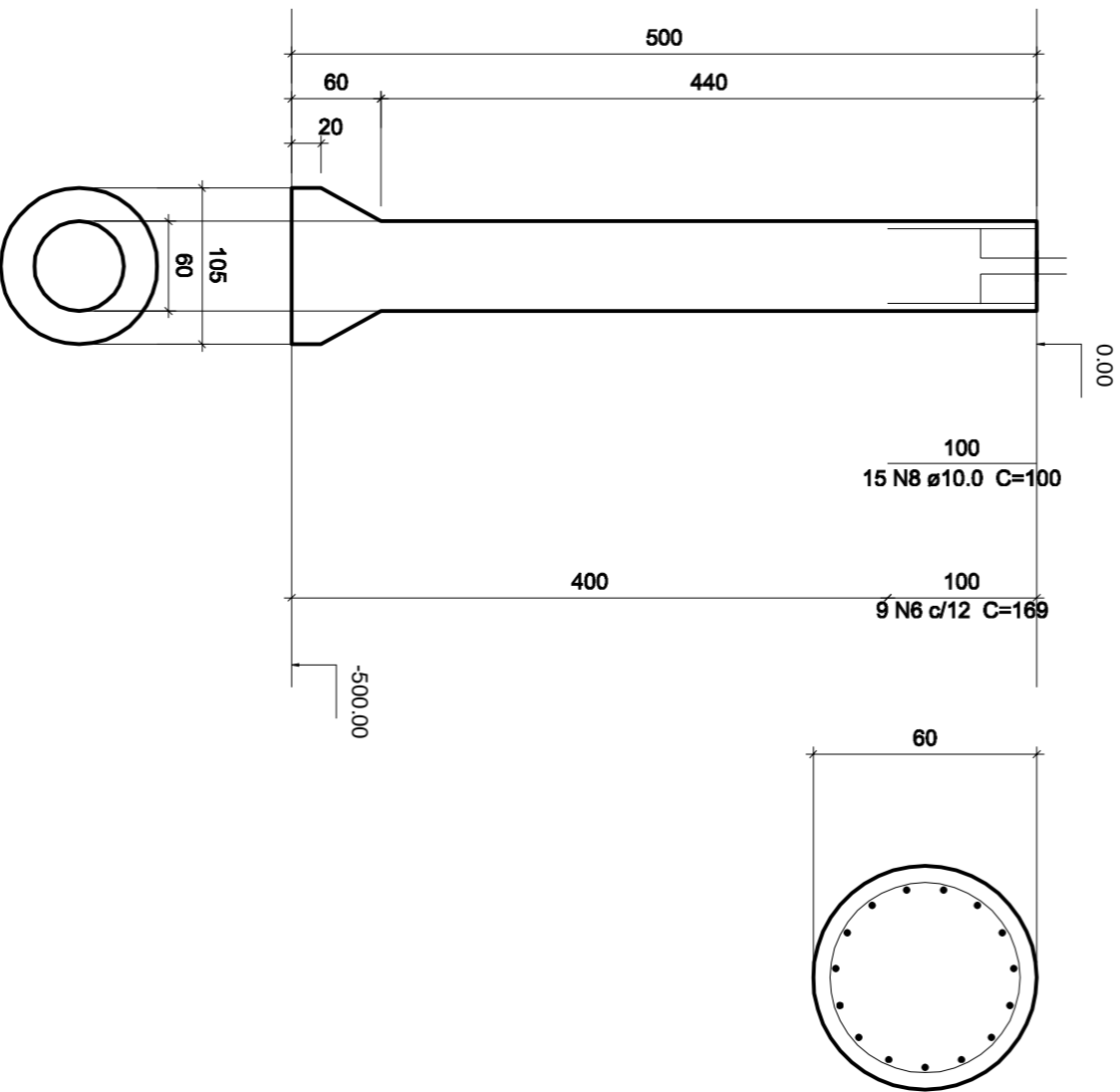
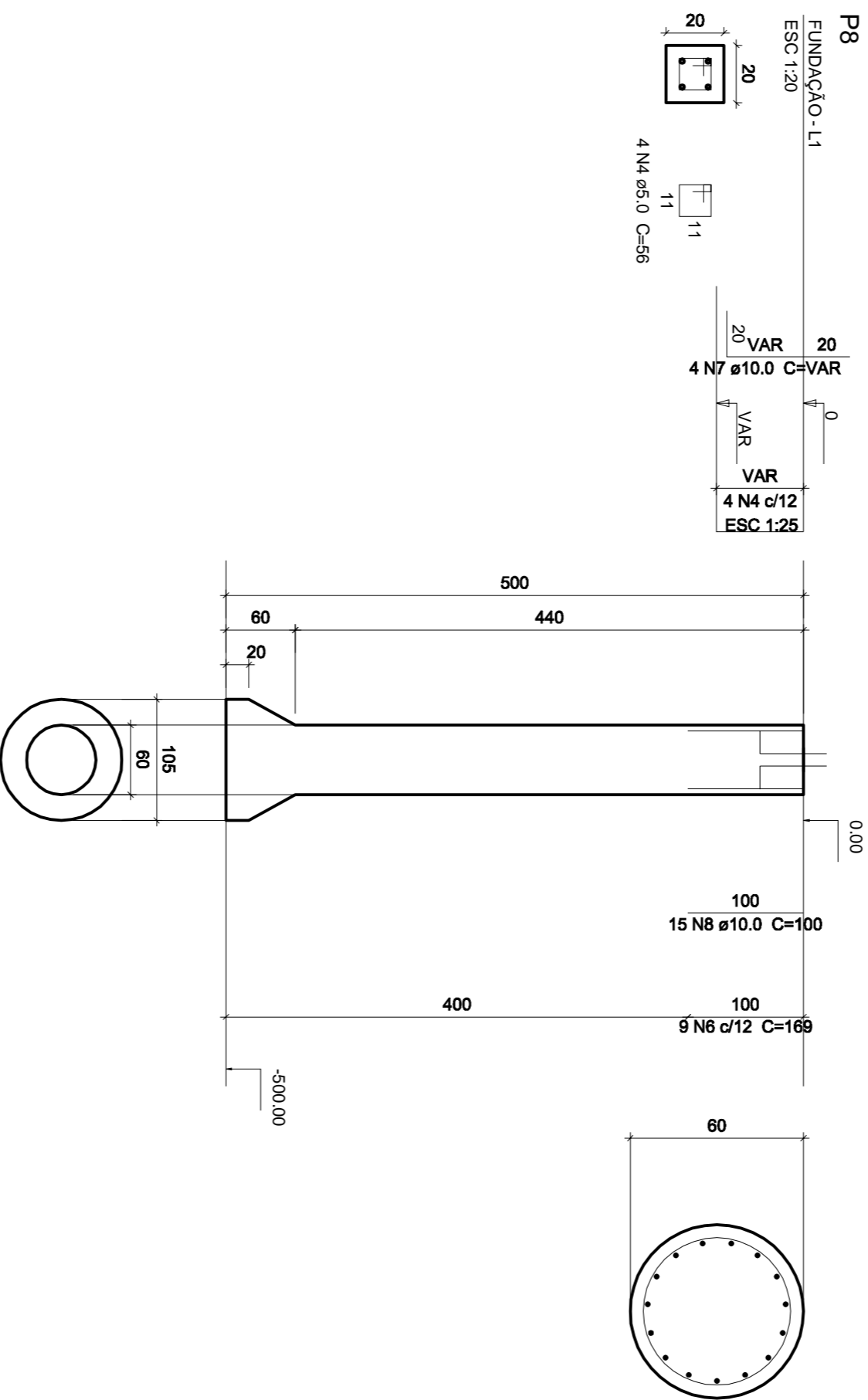
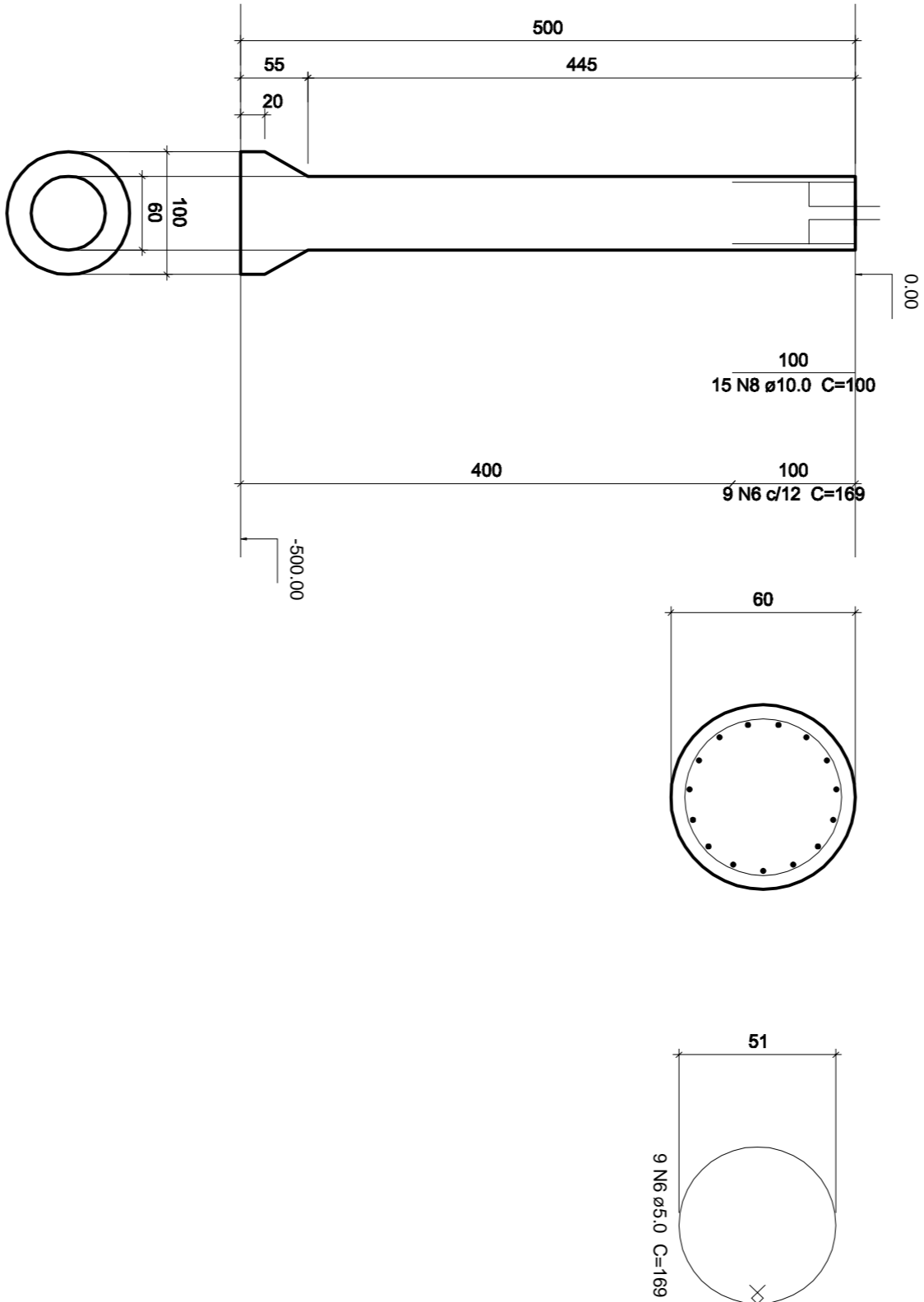
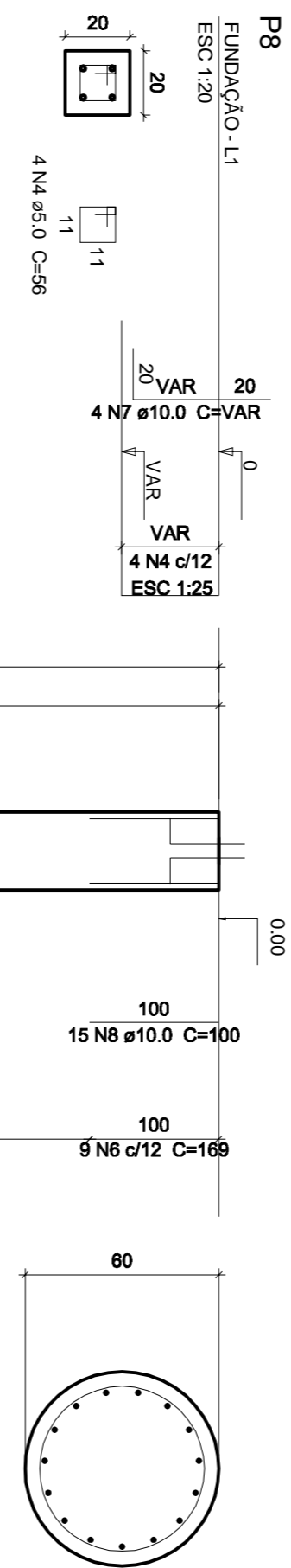
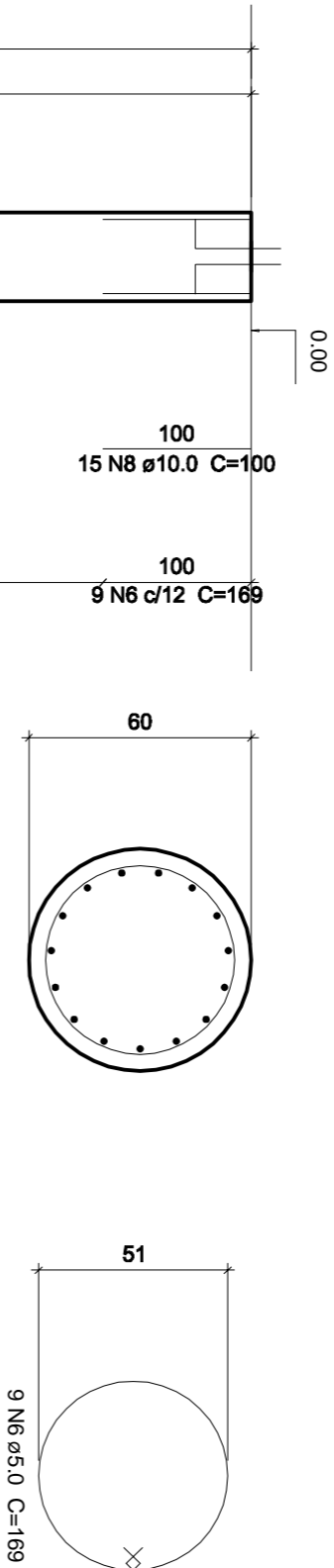


Relação do aço				
2xP1	11xP2	P4		
3xP7	P8	P7		
P18	P21	P22		
T8	7xT17	T18		
11xT20				
	12x1			
AÇO	N	DIAM (mm)	QUANT (com)	C.UINT (cm)
CA50	1	5.0	8	96
	2	5.0	16	26
	3	5.0	16	26
	4	5.0	2	76
	5	5.0	2	76
	6	5.0	2	76
	7	5.0	201	136
	8	10.0	96	169
	9	10.0	300	100
	10	10.0	15	262
				3930

T2=T5=T6=T10=T11=T12=T3=T14=T15=T19=T20



T8



CONTRATANTE:		PREFEITURA MUNICIPAL DE JOÃO NEIVA	
PROGRAMA:		REFORMA E AMPLIAÇÃO DA ANTIGA EMEI HILDA BRITO	
MUNICÍPIO/ÁREA:		JOÃO NEIVA / ES	
TÍTULO:		PROJETO ESTRUTURAL	
DETALHE		LAVANDERIA / VESTIÁRIOS - CRAS	
TUBULÕES T1 ATE T21		FRANCHA:	
DATA: DEZEMBRO/2018		INDICADA	
ARQUIVO:		4.14	